

FIGURE 6  
**HYDRAULIC CATEGORIES**  
**5% AEP EVENT**  
**DARLING HARBOUR CATCHMENT**

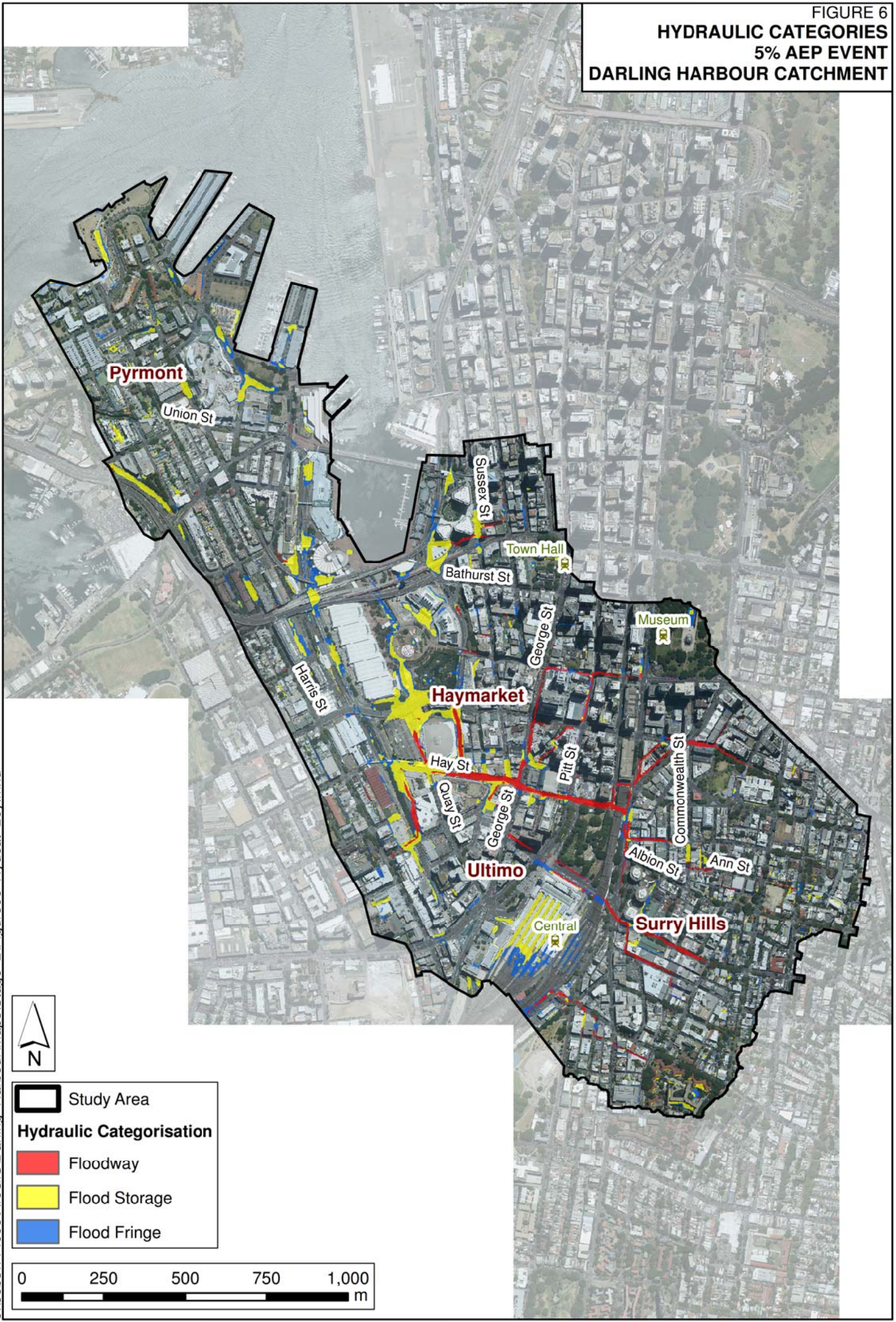
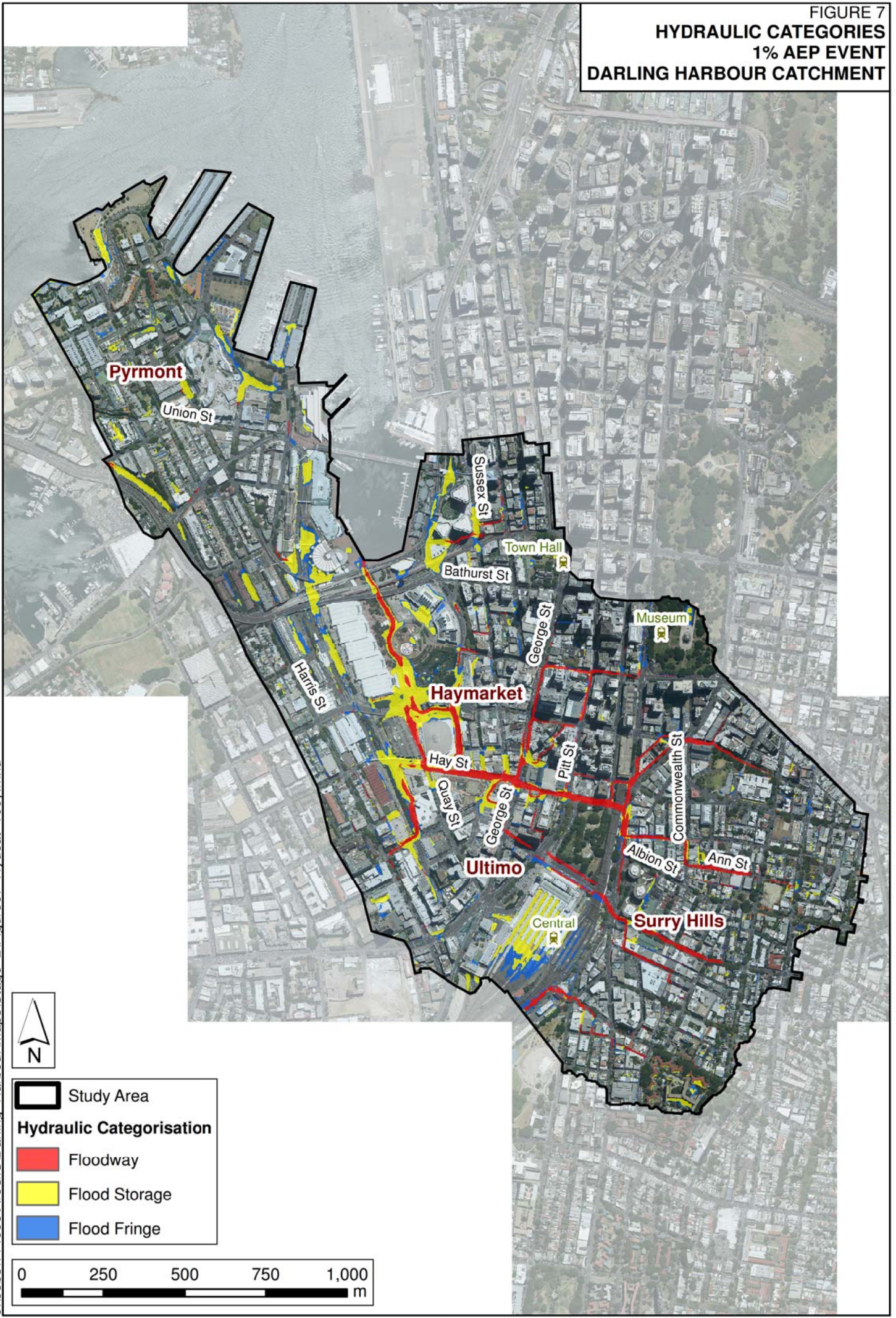


FIGURE 7  
HYDRAULIC CATEGORIES  
1% AEP EVENT  
DARLING HARBOUR CATCHMENT



J:\Jobs\114095\ArcGIS\Darling Harbour\Maps\Stage 2\Figure07 Hydcatt 100y.mxd



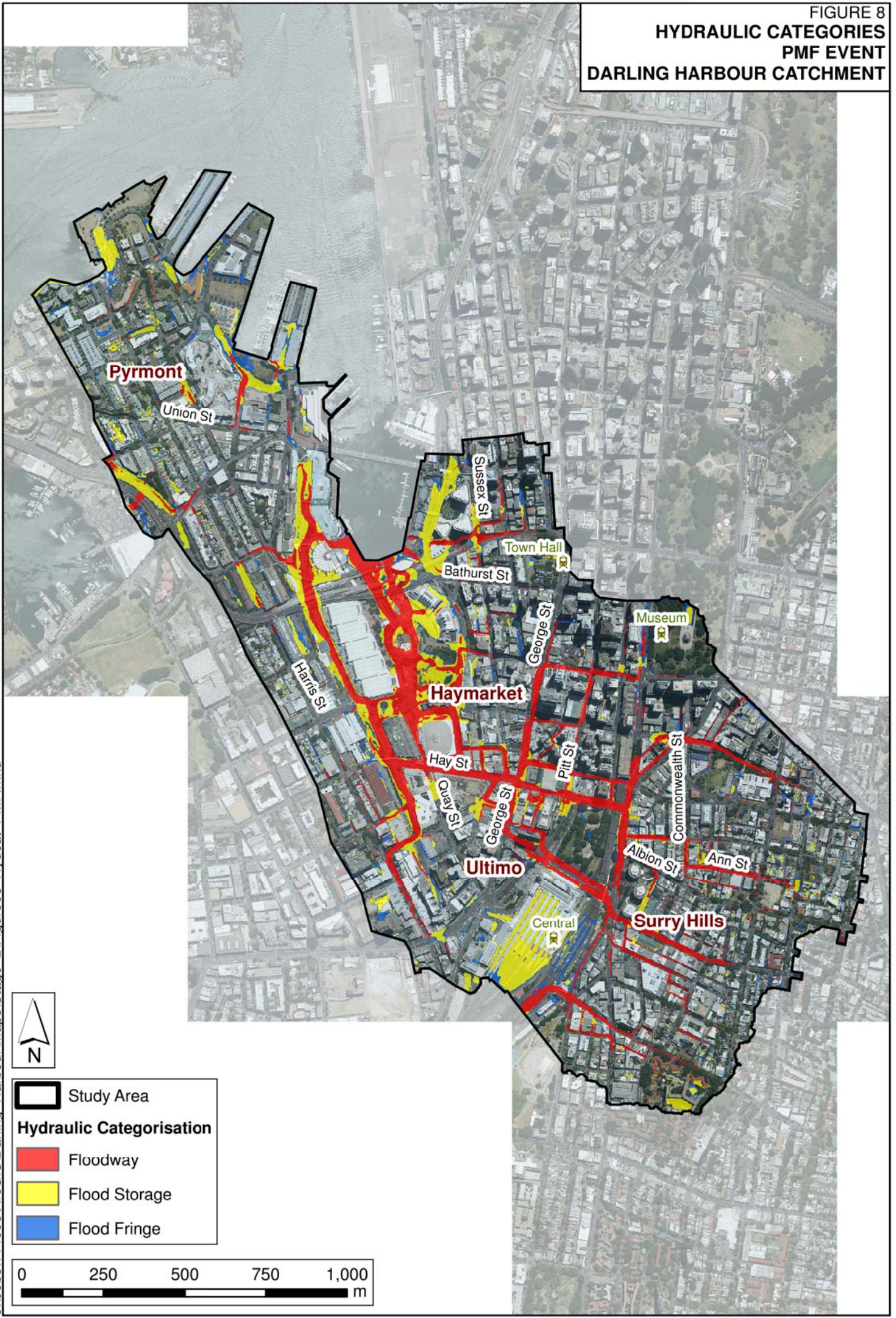
**Study Area**

**Hydraulic Categorisation**

- Floodway
- Flood Storage
- Flood Fringe



FIGURE 8  
**HYDRAULIC CATEGORIES**  
**PMF EVENT**  
**DARLING HARBOUR CATCHMENT**



J:\Jobs\114095\ArcGIS\Darling Harbour\Maps\Stage 2\Figure08 Hyecat PMF.mxd



**Study Area**

**Hydraulic Categorisation**

- Floodway
- Flood Storage
- Flood Fringe



FIGURE 9  
HAZARD CATEGORIES  
0.5 EY EVENT  
DARLING HARBOUR CATCHMENT

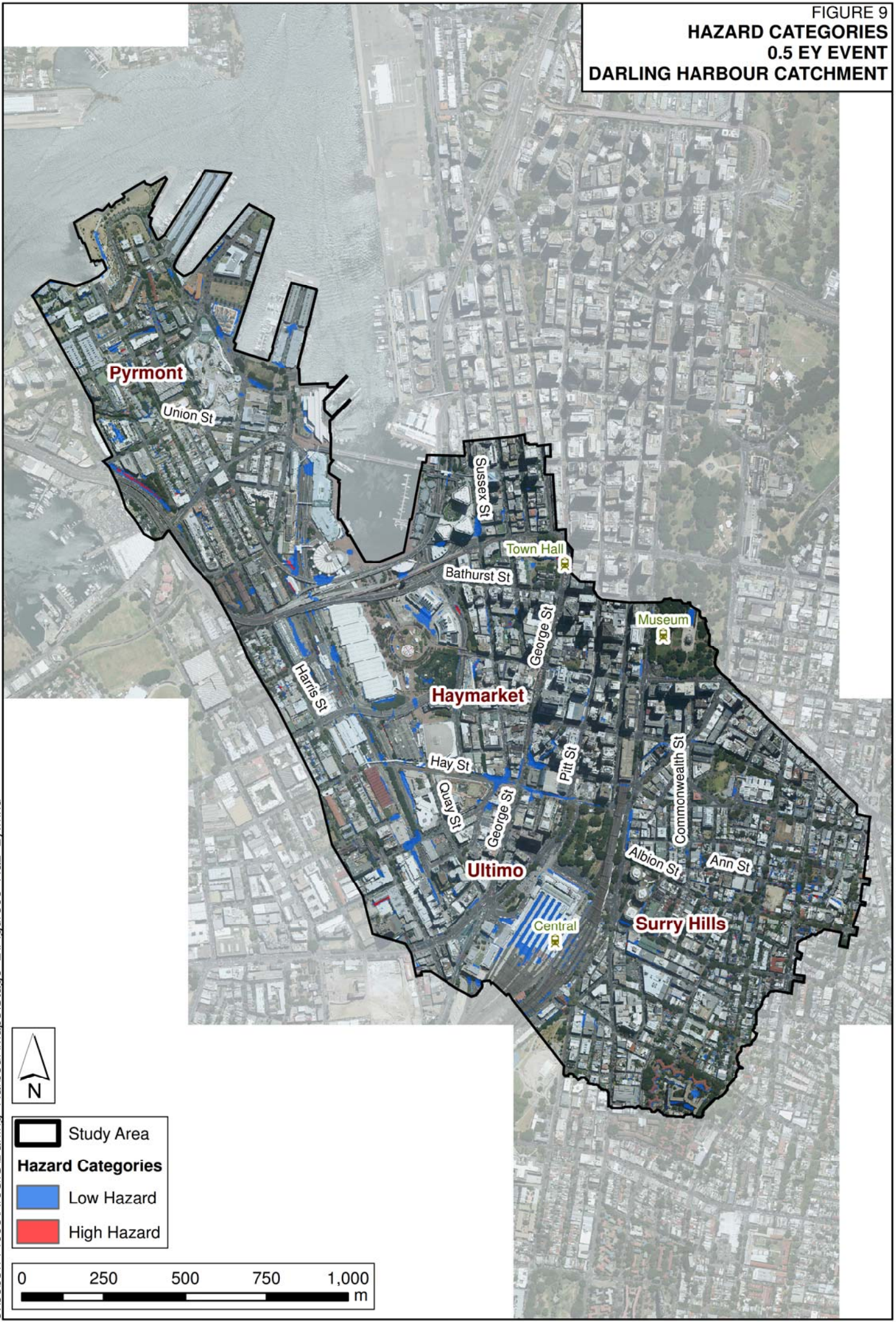


FIGURE 10  
HAZARD CATEGORIES  
0.2 EY EVENT  
DARLING HARBOUR CATCHMENT



FIGURE 11  
HAZARD CATEGORIES  
10% AEP EVENT  
DARLING HARBOUR CATCHMENT

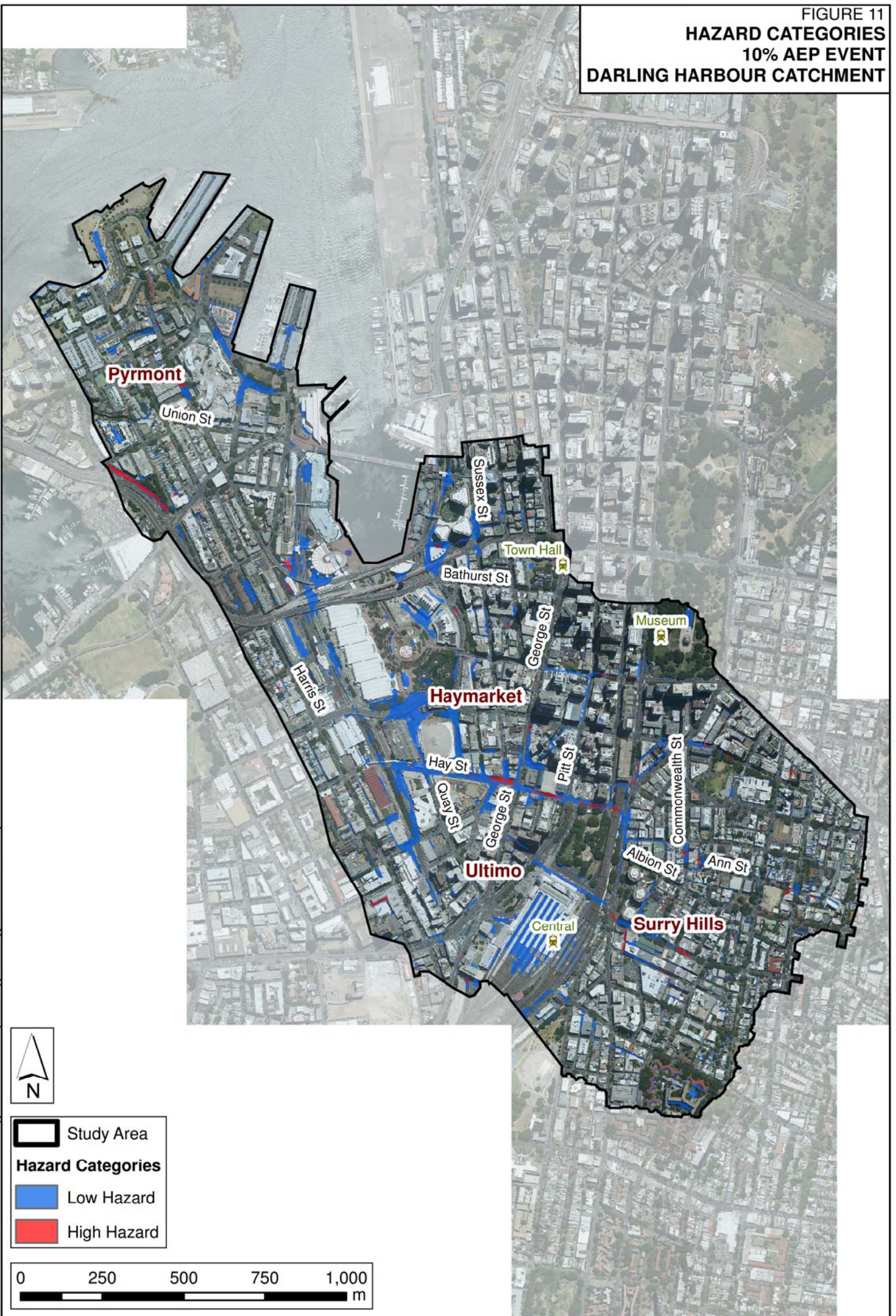
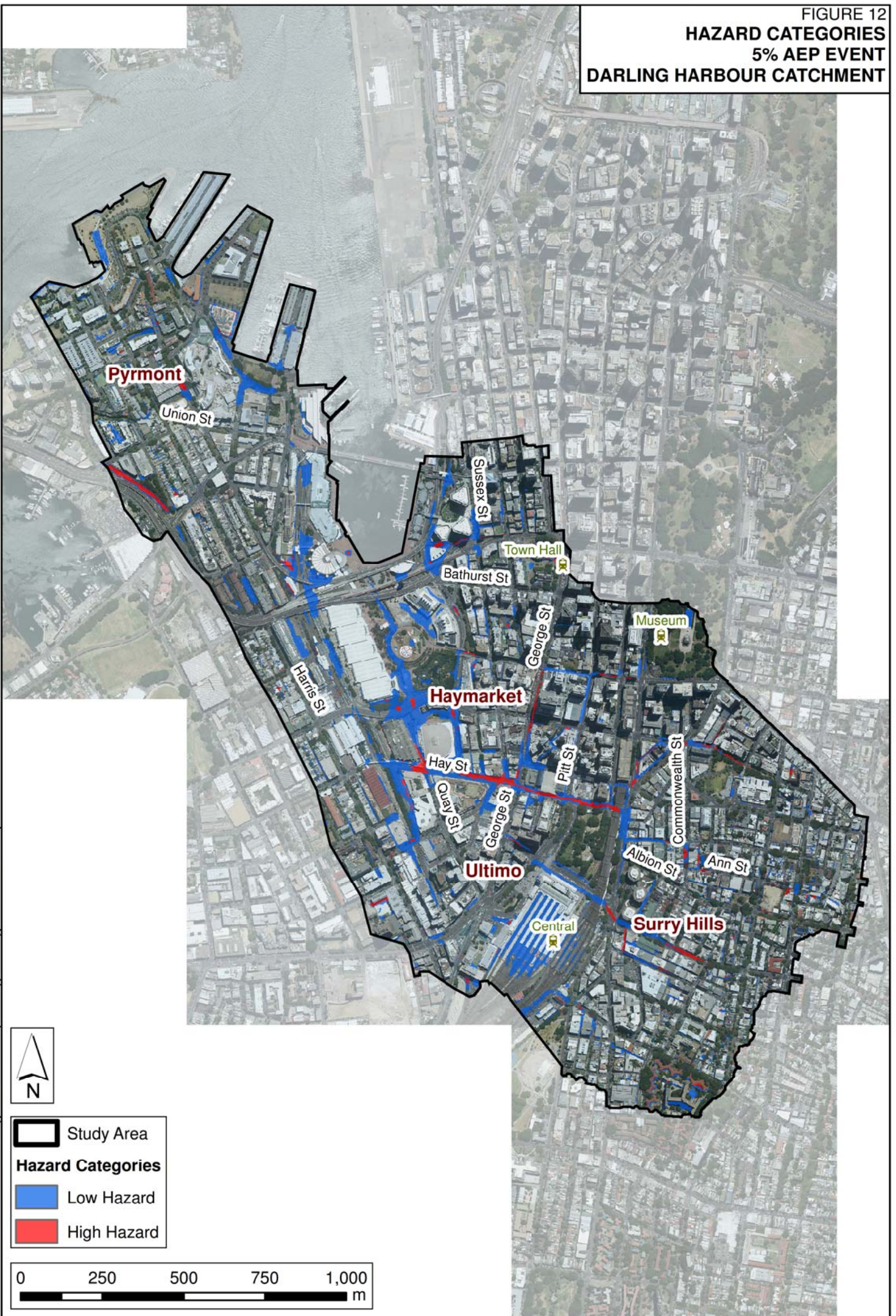
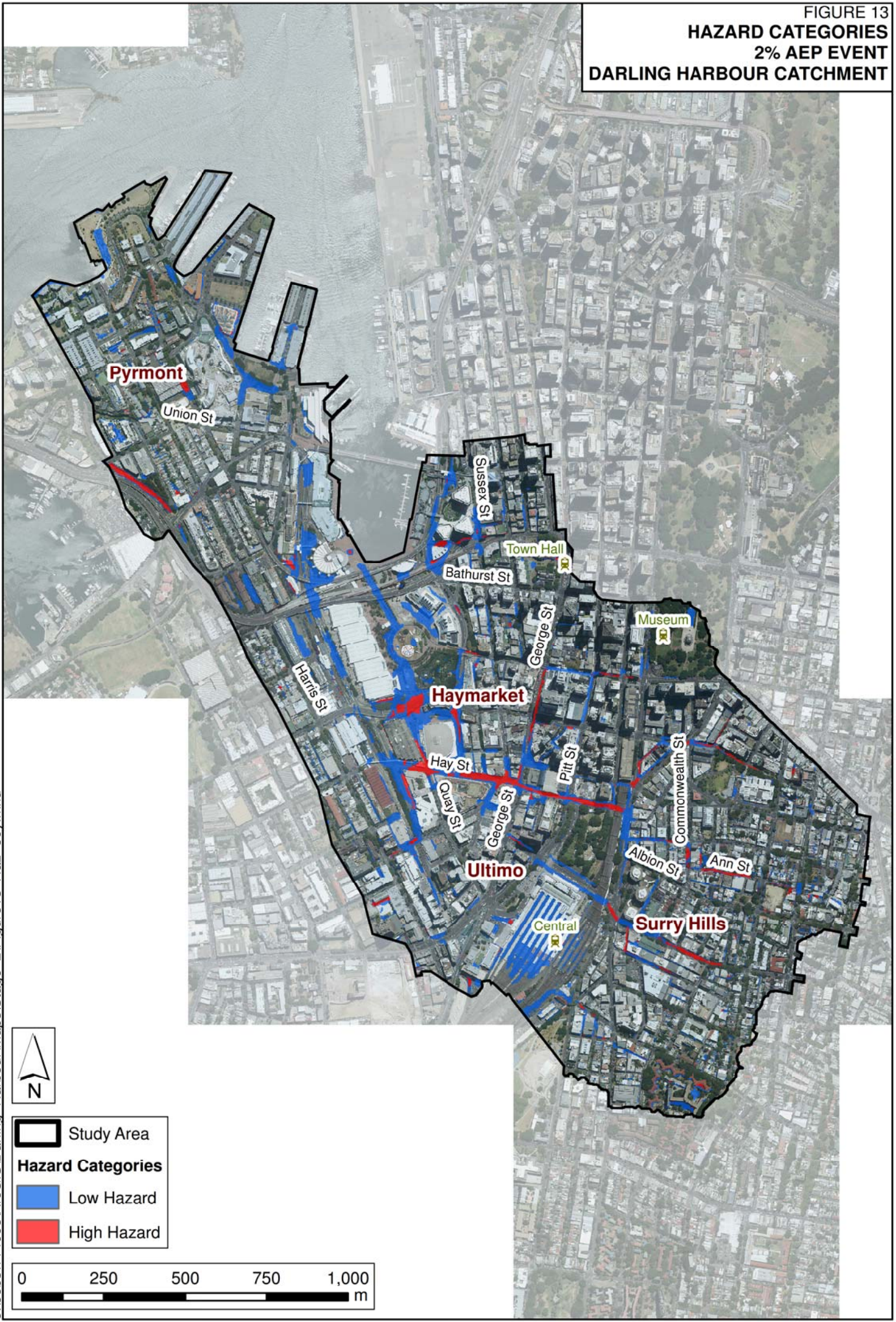


FIGURE 12  
HAZARD CATEGORIES  
5% AEP EVENT  
DARLING HARBOUR CATCHMENT



**FIGURE 13**  
**HAZARD CATEGORIES**  
**2% AEP EVENT**  
**DARLING HARBOUR CATCHMENT**



J:\Jobs\114095\ArcGIS\Darling Harbour\Maps\Stage 2\Figure13 Haz 50y.mxd



- Study Area
- Hazard Categories**
- Low Hazard
- High Hazard





FIGURE 14  
HAZARD CATEGORIES  
1% AEP EVENT  
DARLING HARBOUR CATCHMENT

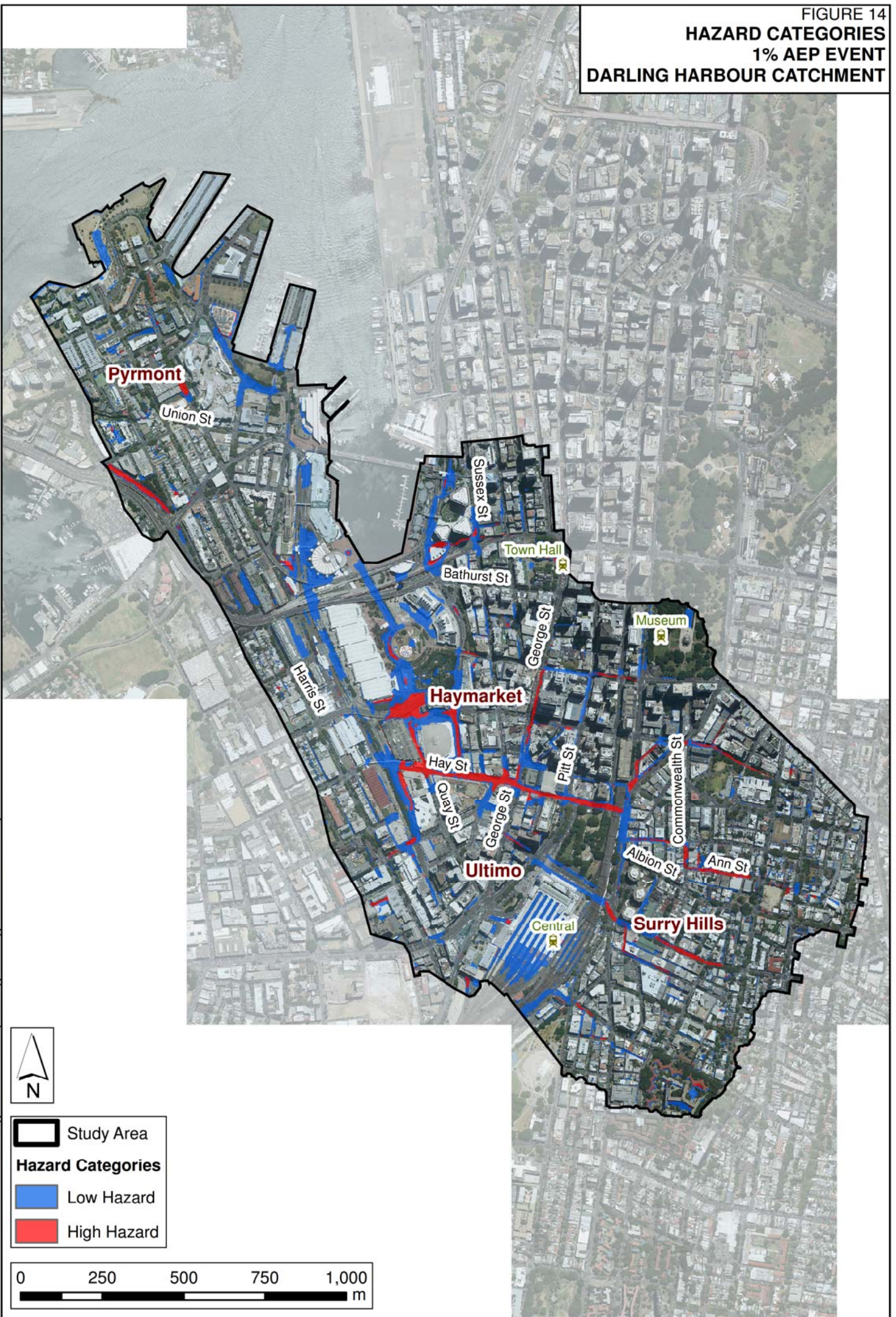
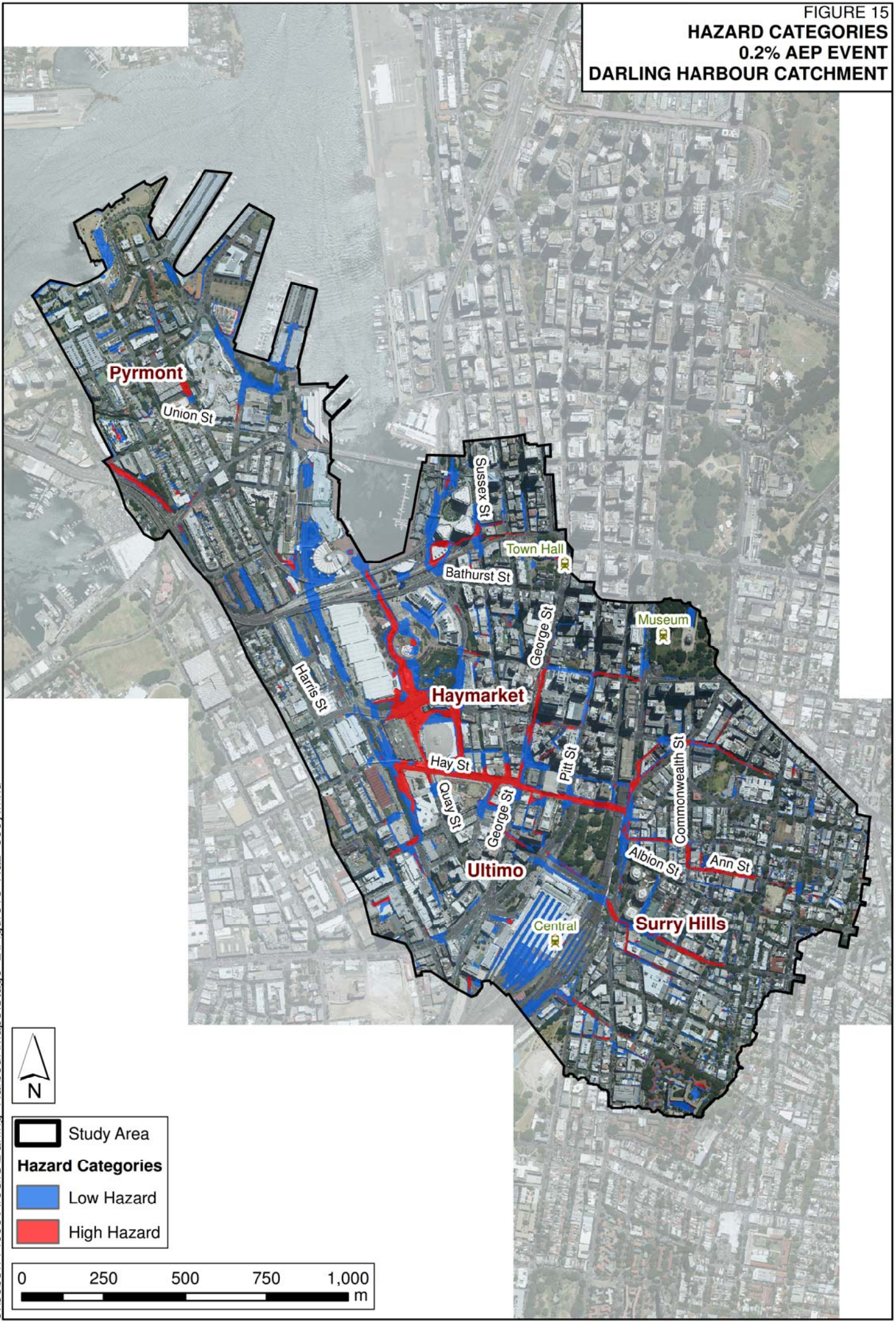
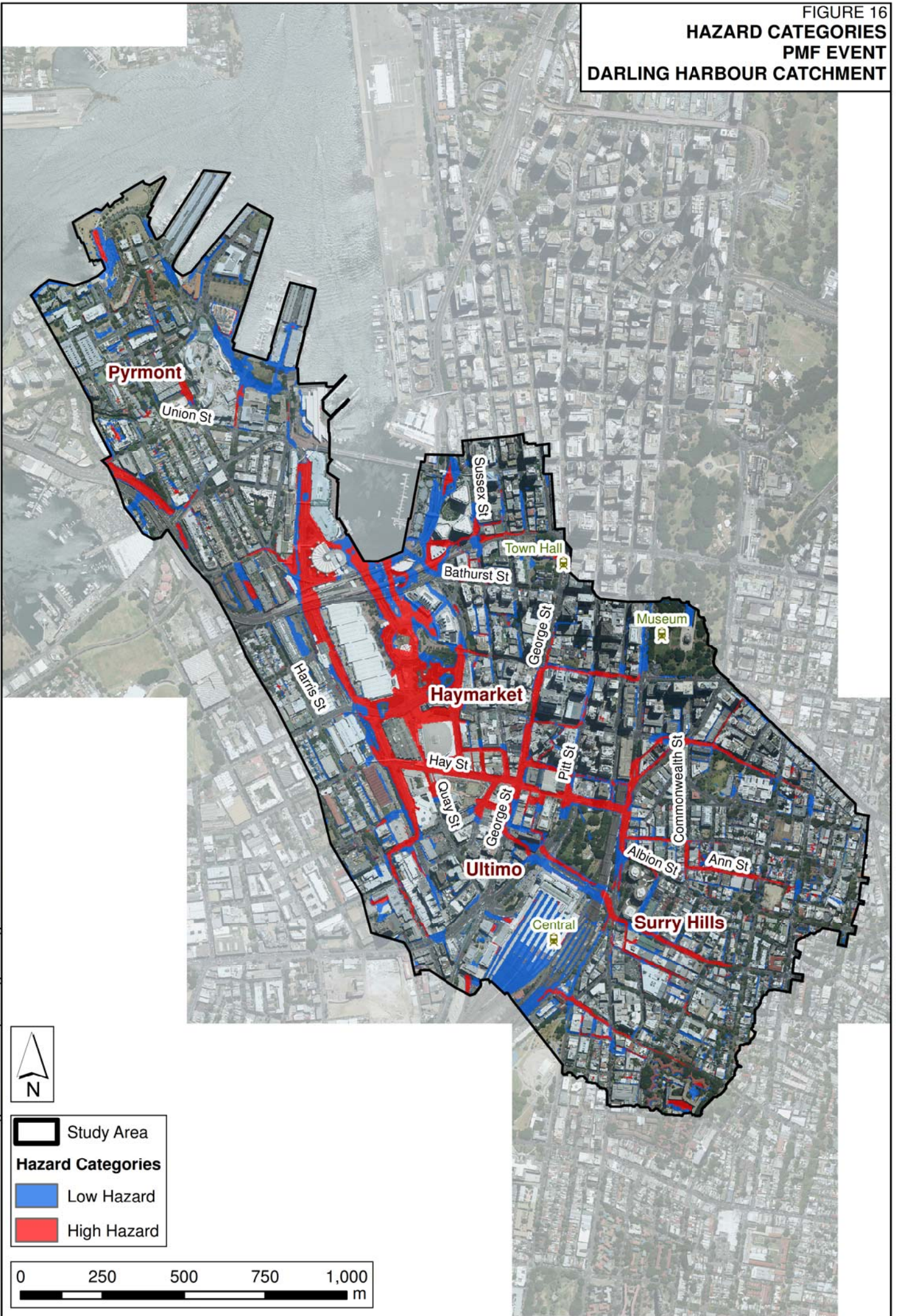


FIGURE 15  
**HAZARD CATEGORIES**  
**0.2% AEP EVENT**  
**DARLING HARBOUR CATCHMENT**



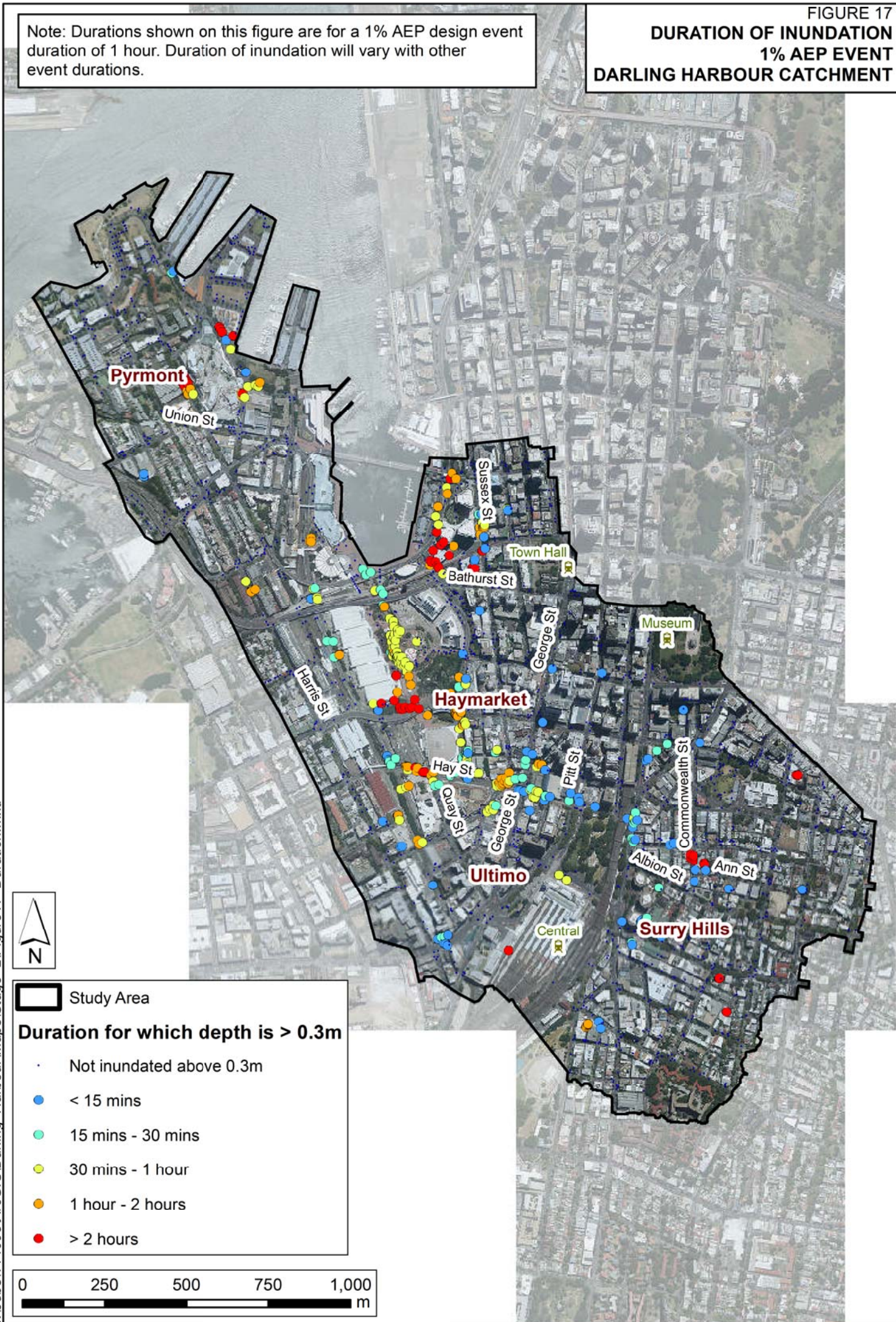
J:\Jobs\114095\ArcGIS\Darling Harbour\Maps\Stage 2\Figure15 Haz 500y.mxd

FIGURE 16  
HAZARD CATEGORIES  
PMF EVENT  
DARLING HARBOUR CATCHMENT

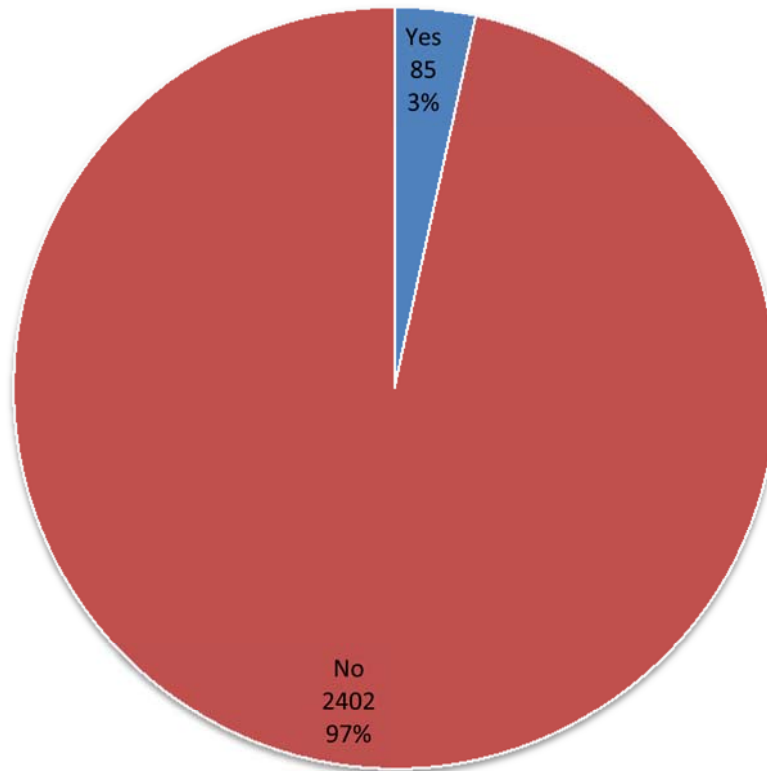


**DURATION OF INUNDATION  
1% AEP EVENT  
DARLING HARBOUR CATCHMENT**

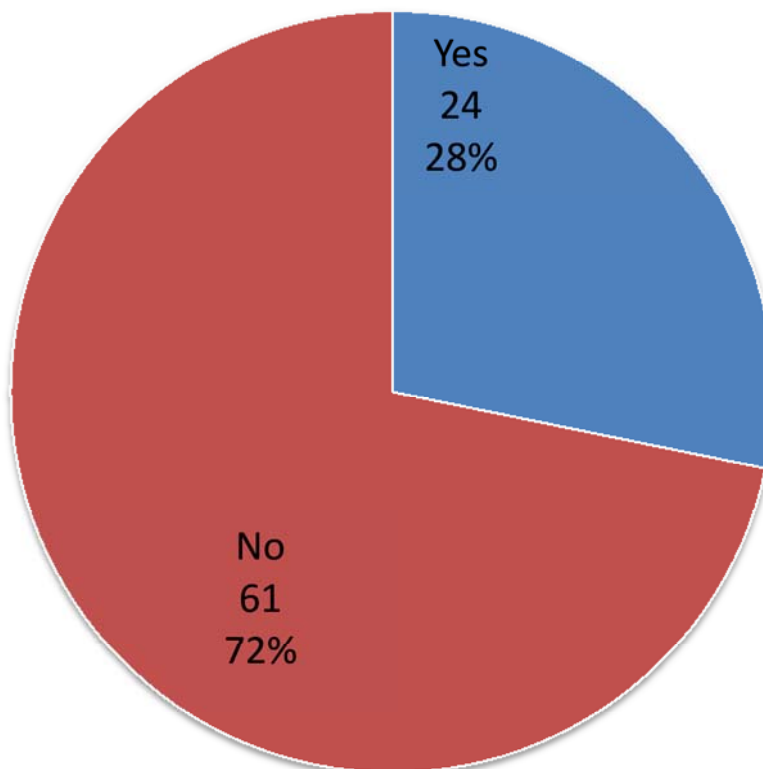
Note: Durations shown on this figure are for a 1% AEP design event duration of 1 hour. Duration of inundation will vary with other event durations.



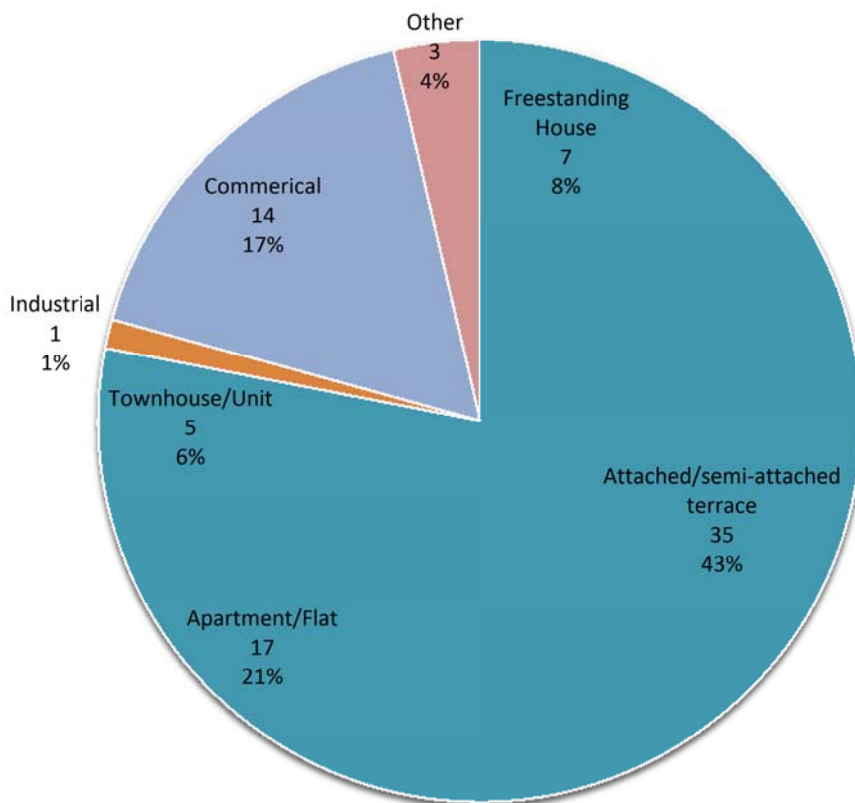
### A: Number of Respondents



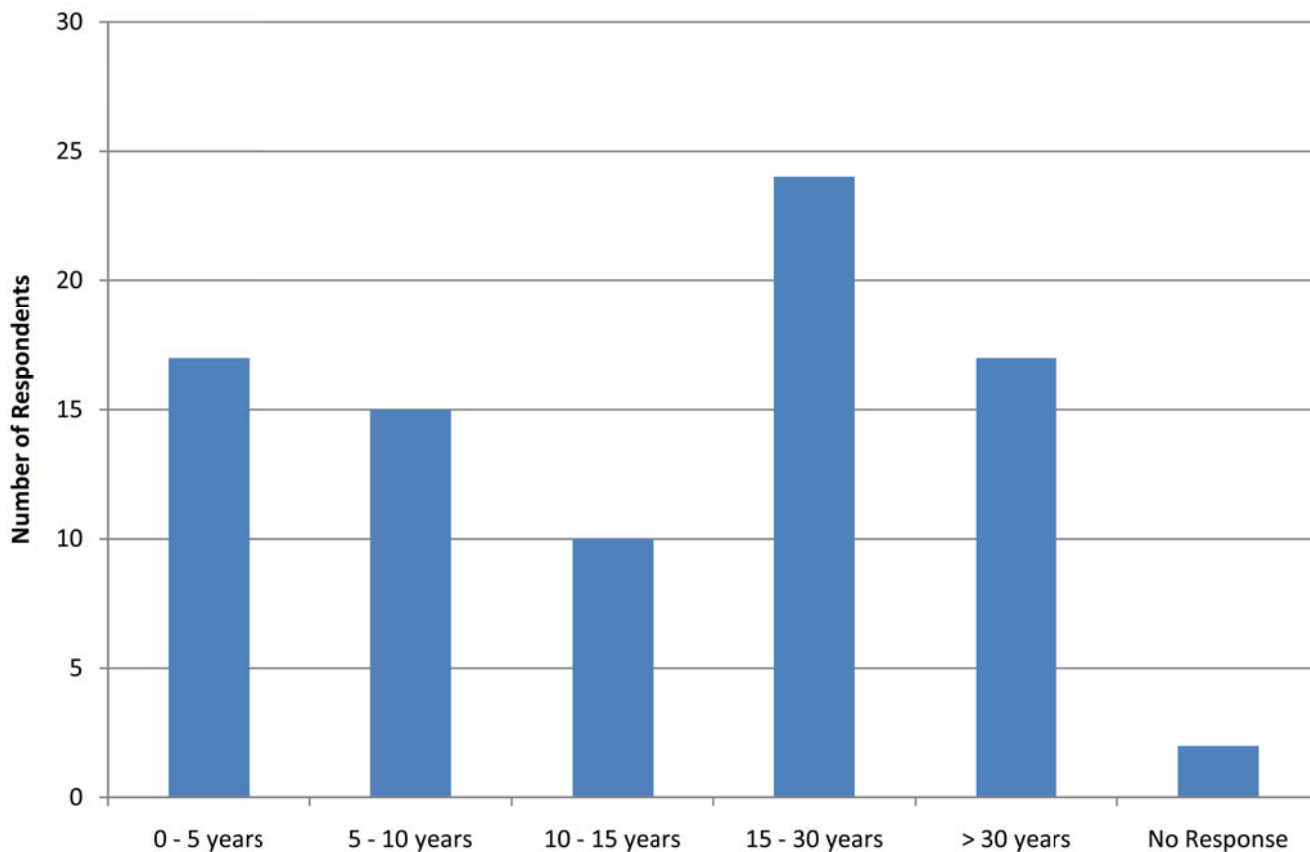
### B: Experienced Flooding



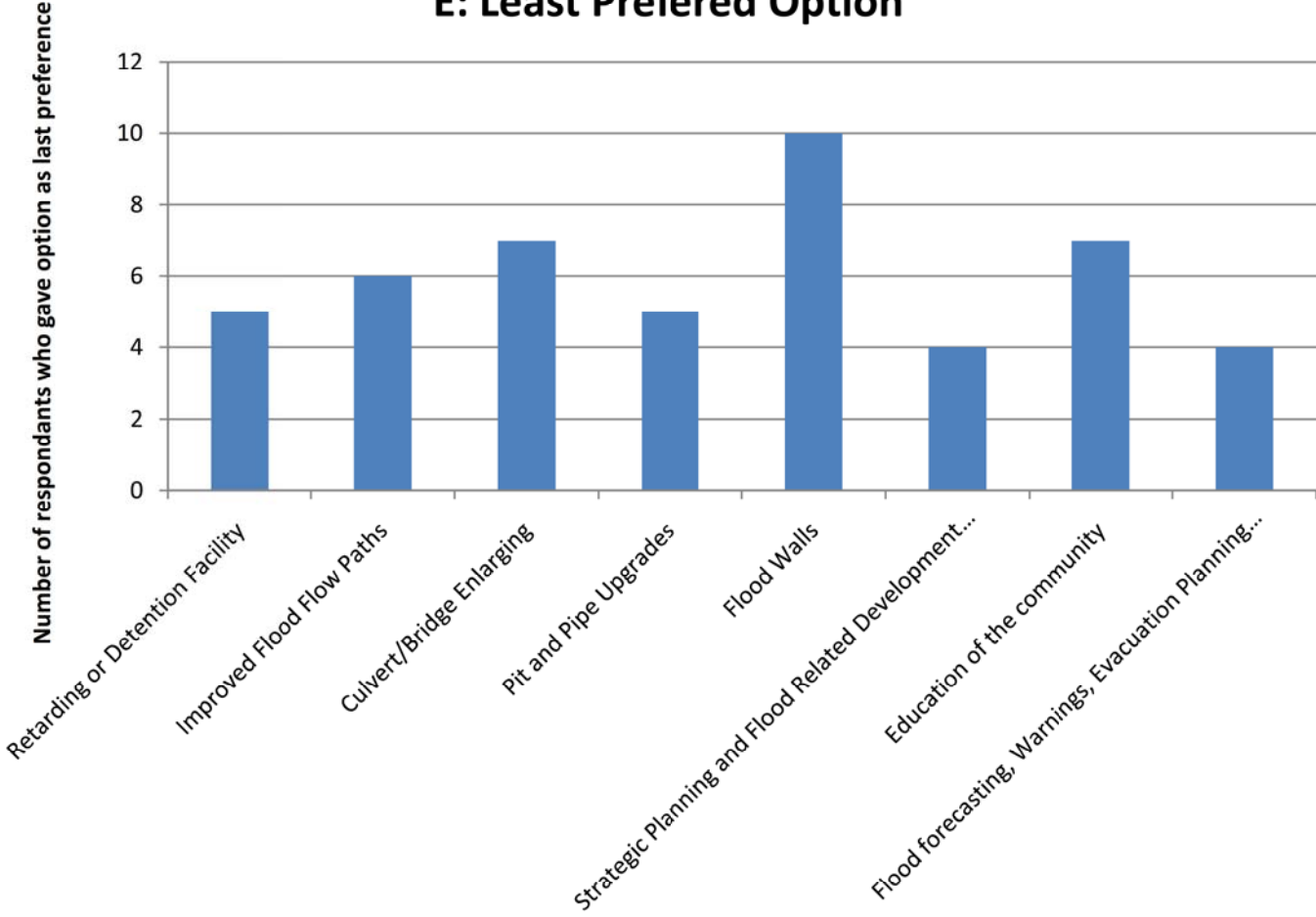
### C: Property Type



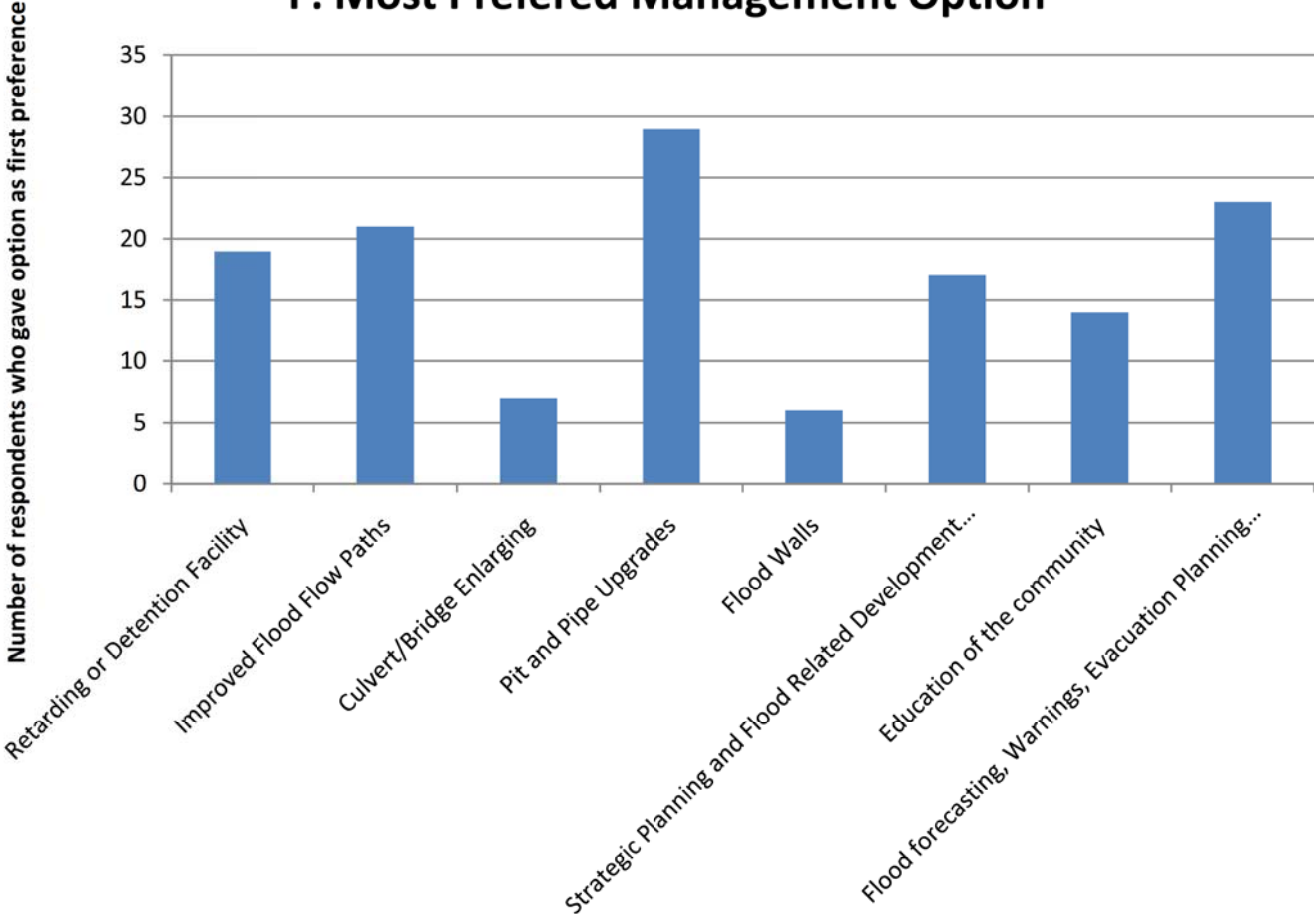
### D: Period of Living/Working/Owning Property



**E: Least Preferred Option**



**F: Most Preferred Management Option**



### G: Location of Flooding Experienced

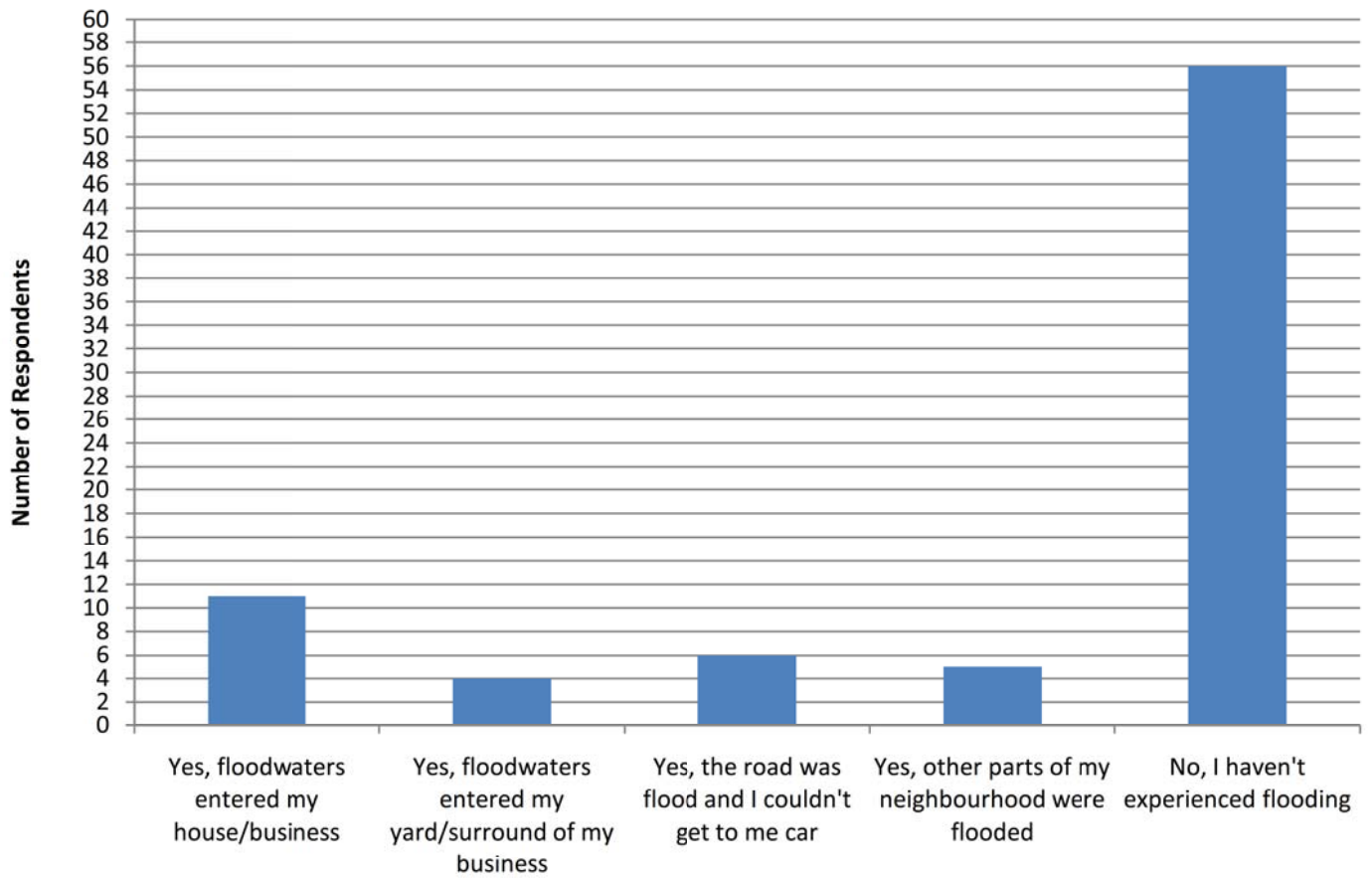
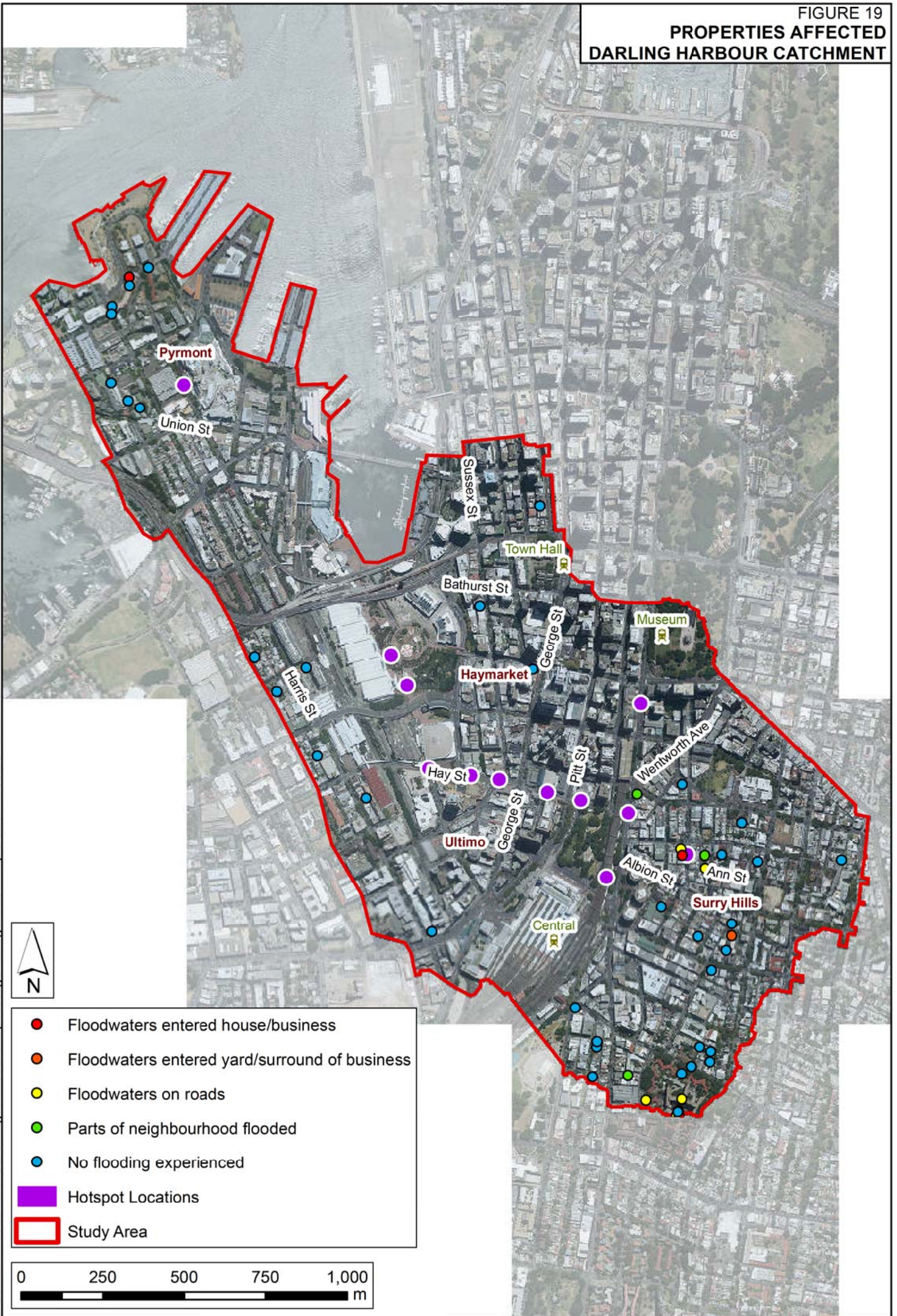




FIGURE 19  
**PROPERTIES AFFECTED**  
**DARLING HARBOUR CATCHMENT**



J:\Jobs\114095\ArcGIS\Darling Harbour\Maps\Stage 2\Figure19 Properties Affected\_DH.mxd

- Floodwaters entered house/business
- Floodwaters entered yard/surround of business
- Floodwaters on roads
- Parts of neighbourhood flooded
- No flooding experienced
- Hotspot Locations
- Study Area

0      250      500      750      1,000  
 m

FIGURE 20  
DARLING HARBOUR  
OVER FLOOR FLOOD LIABILITY

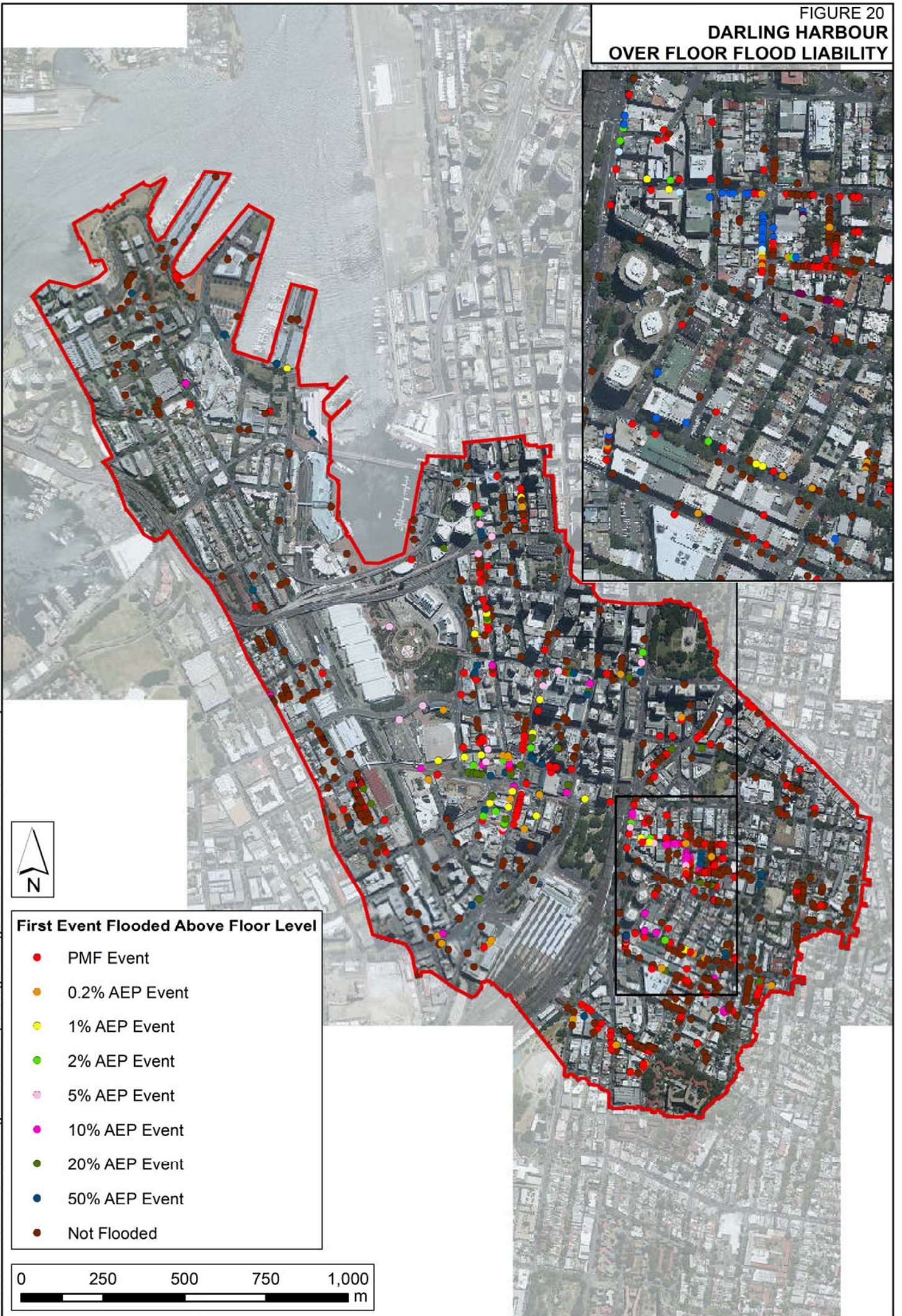
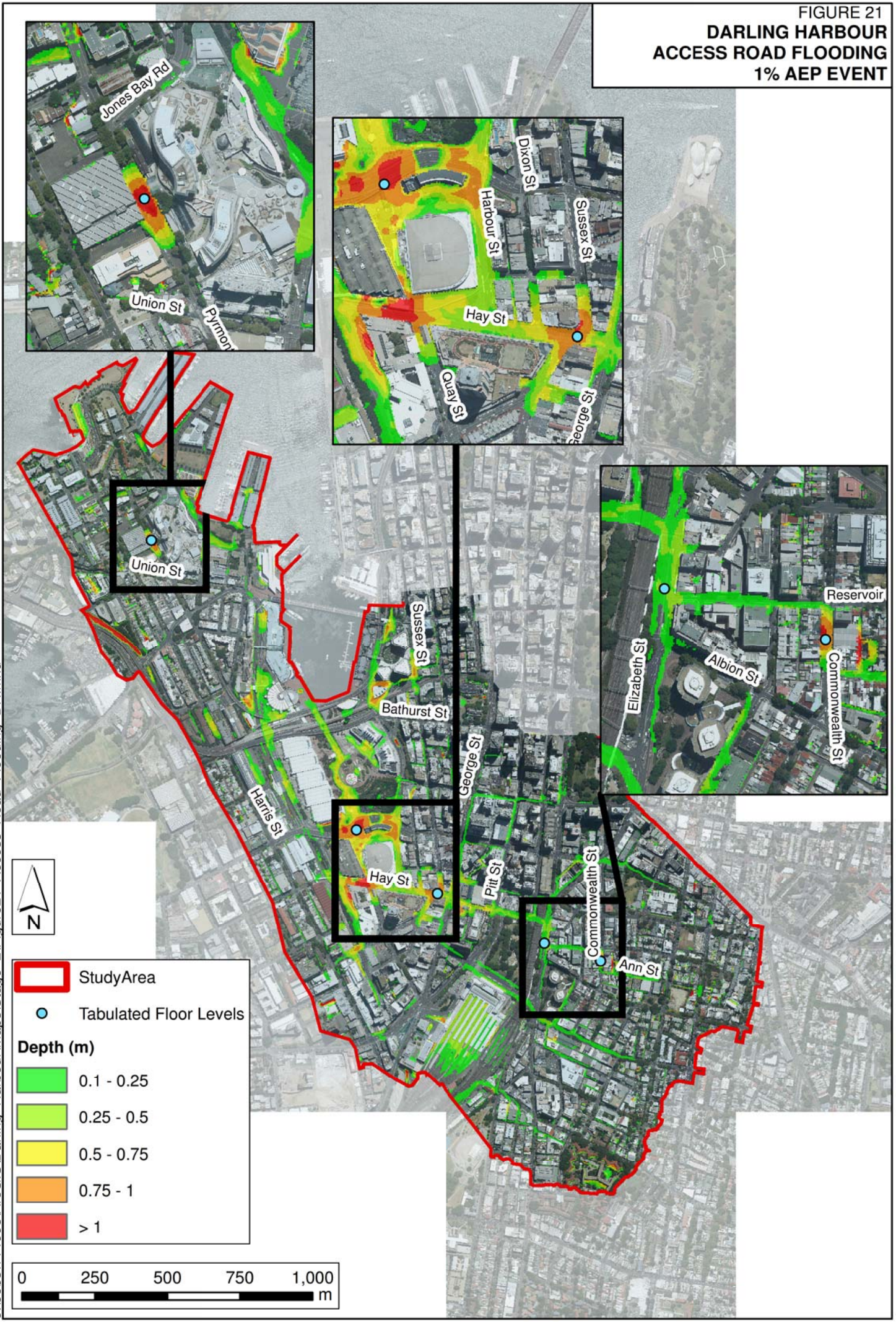
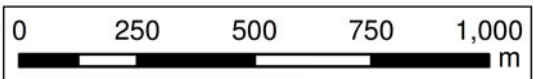


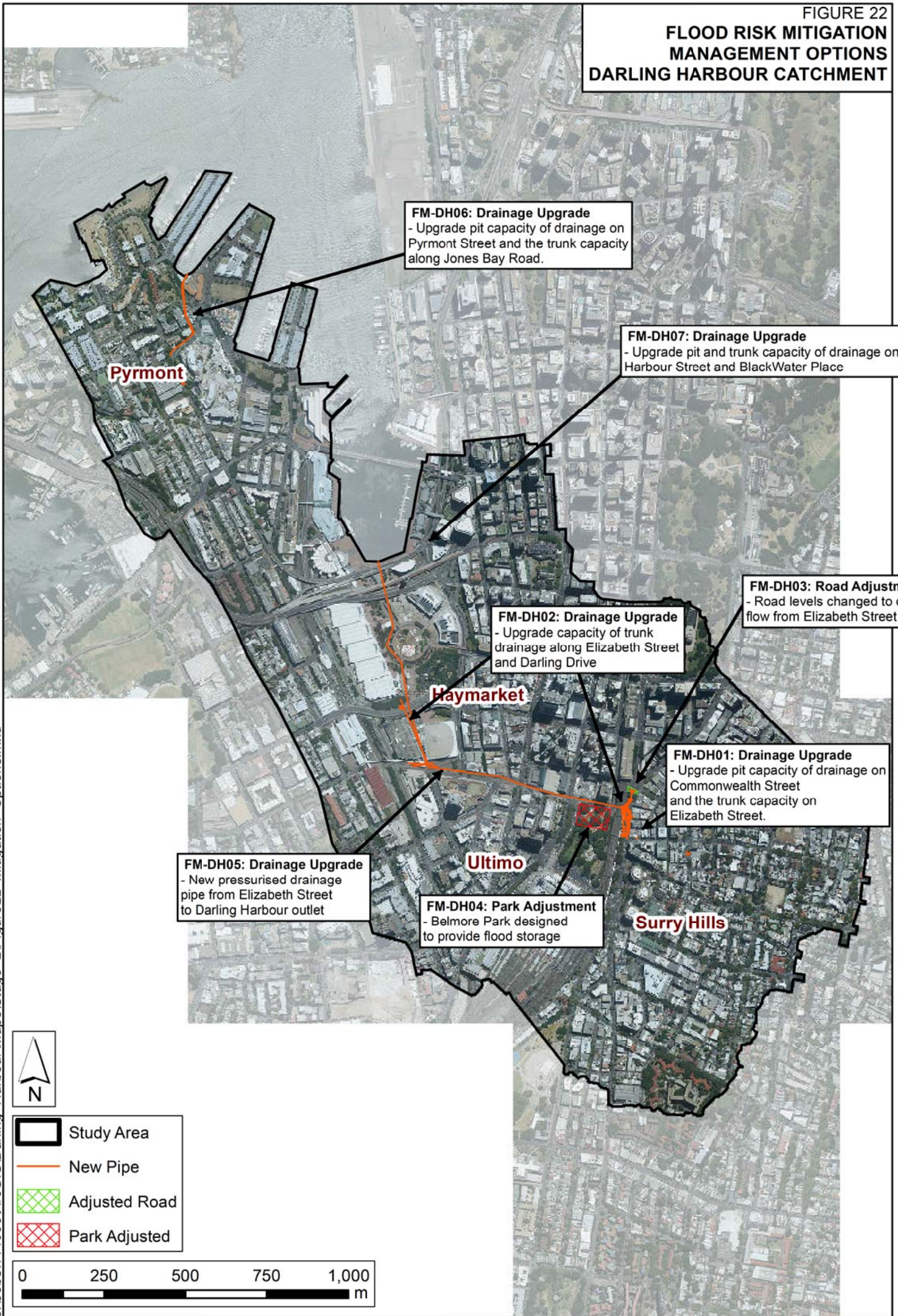
FIGURE 21  
**DARLING HARBOUR  
 ACCESS ROAD FLOODING  
 1% AEP EVENT**



- Study Area
- Tabulated Floor Levels
- Depth (m)**
- 0.1 - 0.25
- 0.25 - 0.5
- 0.5 - 0.75
- 0.75 - 1
- > 1



**FIGURE 22  
FLOOD RISK MITIGATION  
MANAGEMENT OPTIONS  
DARLING HARBOUR CATCHMENT**



**FM-DH06: Drainage Upgrade**  
- Upgrade pit capacity of drainage on Pymont Street and the trunk capacity along Jones Bay Road.

**FM-DH07: Drainage Upgrade**  
- Upgrade pit and trunk capacity of drainage on Harbour Street and BlackWater Place

**FM-DH03: Road Adjustment**  
- Road levels changed to divert flow from Elizabeth Street





**FM-DH02: Drainage Upgrade**  
- Upgrade capacity of trunk drainage along Elizabeth Street and Darling Drive

**FM-DH01: Drainage Upgrade**  
- Upgrade pit capacity of drainage on Commonwealth Street and the trunk capacity on Elizabeth Street.

**FM-DH05: Drainage Upgrade**  
- New pressurised drainage pipe from Elizabeth Street to Darling Harbour outlet

**FM-DH04: Park Adjustment**  
- Belmore Park designed to provide flood storage



-  Study Area
-  New Pipe
-  Adjusted Road
-  Park Adjusted

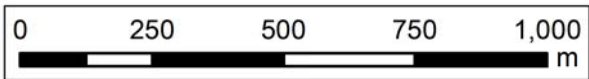


FIGURE 23  
COMMONWEALTH STREET  
EXISTING DESIGN DEPTH  
1% AEP EVENT

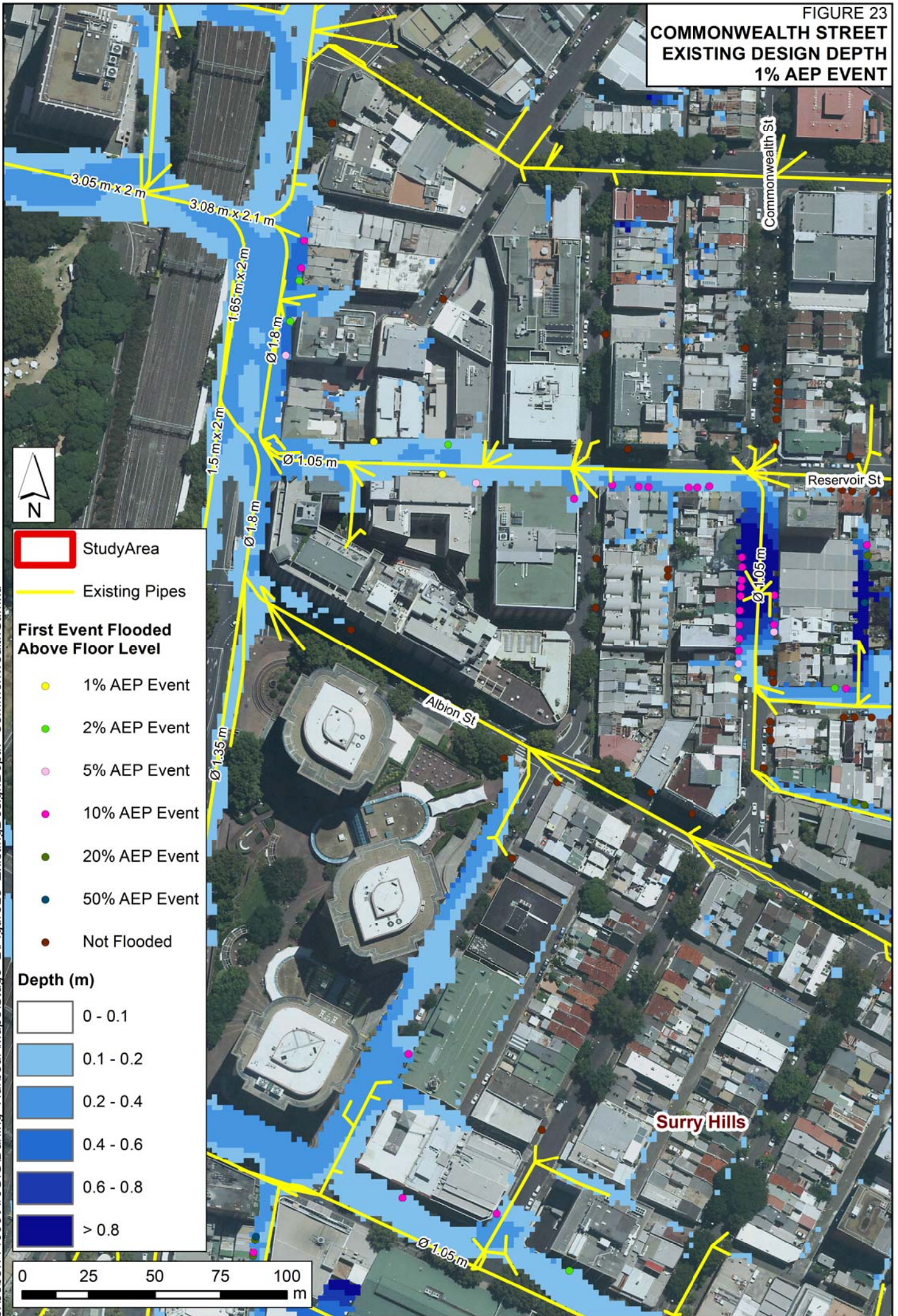
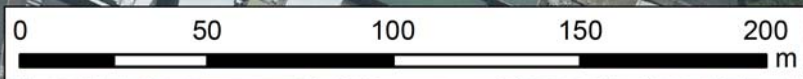


FIGURE 24  
 OPTION FM - DH01  
 5% AEP EVENT FLOOD IMPACT

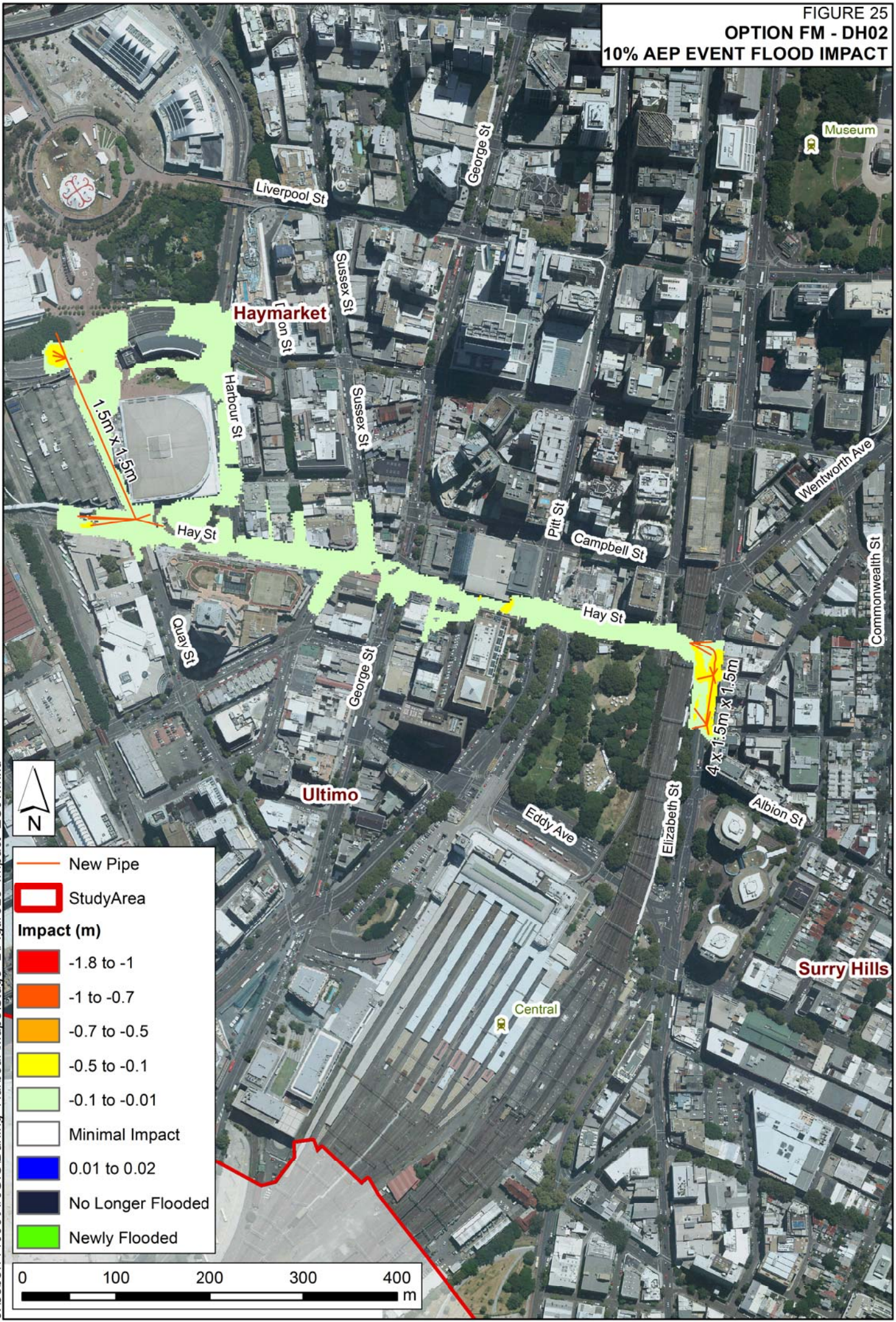


- New Pipe
- 84m<sup>3</sup>/s Peak Flow (Existing)
- 76m<sup>3</sup>/s Peak Flow (Upgrade)
- StudyArea
- Impact (m)**
- 1.8 to -1
- 1 to -0.7
- 0.7 to -0.5
- 0.5 to -0.1
- 0.1 to -0.01
- Minimal Impact
- 0.01 to 0.02
- No Longer Flooded
- Newly Flooded










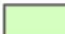



J:\Jobs\114095\ArcGIS\Darling Harbour\Maps\Stage 2\Figure24\_Impact\_CS02.mxd

FIGURE 25  
 OPTION FM - DH02  
 10% AEP EVENT FLOOD IMPACT



J:\Jobs\114095\ArcGIS\Darling Harbour\Maps\Stage 2\Figure25\_Impact\_ES01.mxd



-  New Pipe
-  StudyArea
- Impact (m)**
-  -1.8 to -1
-  -1 to -0.7
-  -0.7 to -0.5
-  -0.5 to -0.1
-  -0.1 to -0.01
-  Minimal Impact
-  0.01 to 0.02
-  No Longer Flooded
-  Newly Flooded

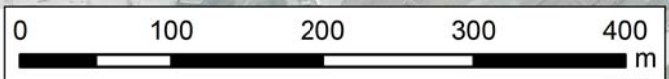
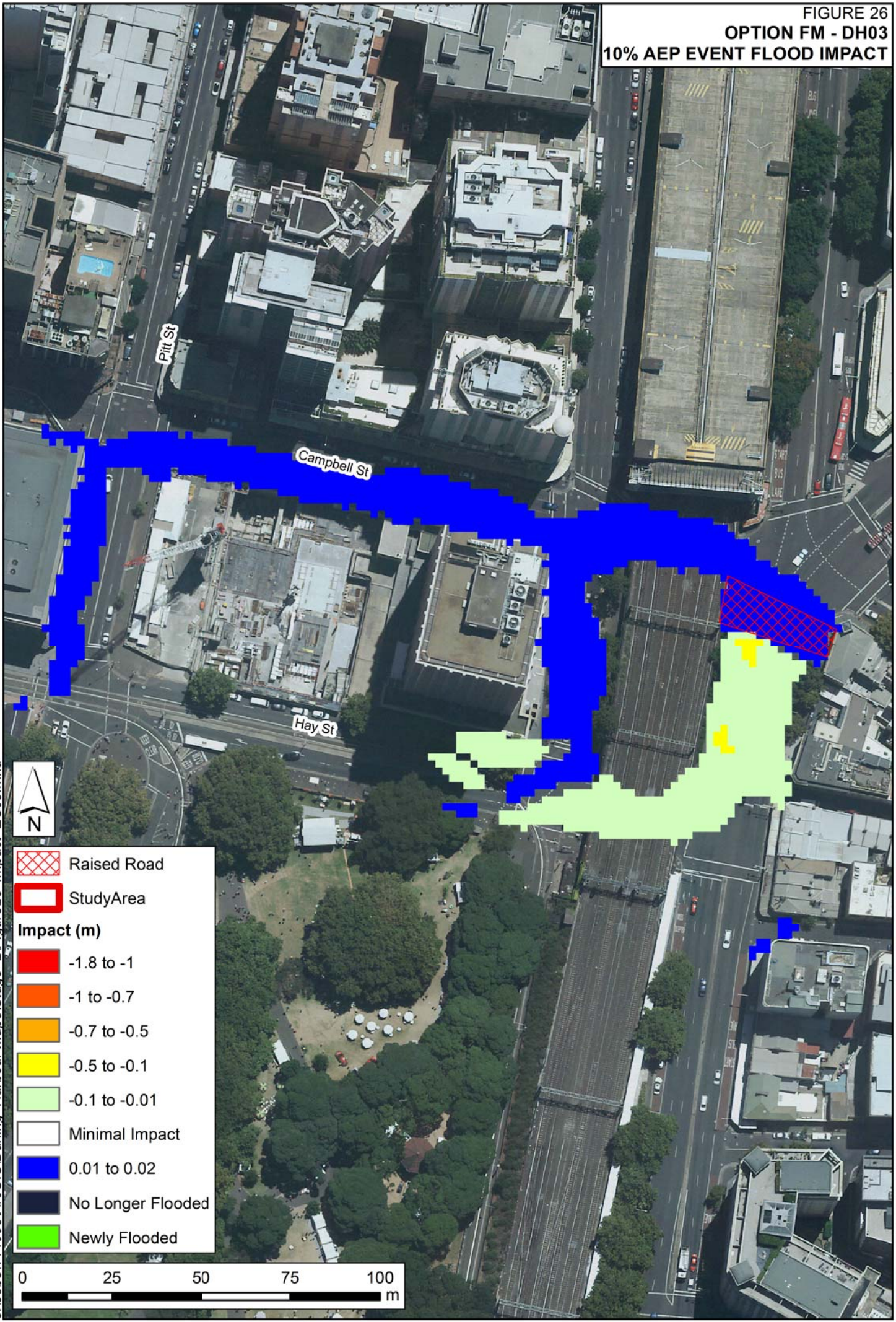







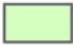



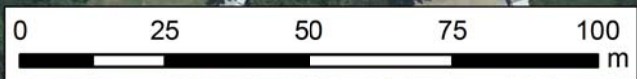


FIGURE 26  
 OPTION FM - DH03  
 10% AEP EVENT FLOOD IMPACT



-  Raised Road
-  StudyArea
- Impact (m)**
-  -1.8 to -1
-  -1 to -0.7
-  -0.7 to -0.5
-  -0.5 to -0.1
-  -0.1 to -0.01
-  Minimal Impact
-  0.01 to 0.02
-  No Longer Flooded
-  Newly Flooded



J:\Jobs\114095\ArcGIS\Darling Harbour\Maps\Stage 2\Figure26\_Impact ES03.mxd